

PhotoAcute Users Guide

Introduction.....	2
Basic Principles	2
Snapping several images	2
Processing images	2
Views.....	2
Snapping.....	3
Snapped Images	3
Processing	4
Processing Options.....	4
Processing Results	4
Photo Album.....	5
Settings.....	5
Support.....	5

Introduction

PhotoAcute improves the quality of pictures snapped by phone built-in camera by applying set of image processing algorithms.

PhotoAcute is compatible with the following phone models:
Nokia 3650, Nokia 3660, Nokia 6600, Nokia 6620, Nokia 6260

NOTE: The image processing algorithms are tuned to particular camera models to achieve maximum quality. Use the version specially built for your phone model!

Basic Principles

Snapping several images

For achieving the better resolution and sharpness, PhotoAcute snaps several images to produce one photo. Snapping one photo may take a few seconds. The scene should not move during this time.

PhotoAcute is best used for snapping static scenes. When photographing people, ask them to say cheese and freeze for a moment.

If there is a motion during snapping, you still get a large photo from first snapped image, with corrected geometry and brightness, enlarged with advanced zoom algorithm to 1280x960.

Processing images

Unlike the usual camera applications, you do not get the ready photo right after snapping. In PhotoAcute the snapped photos must be *processed* to get the picture. You may think of it as of photo development in a film camera.

Snapped images are stored on Memory Card. You can process them either right after snapping, or later, when it is most convenient for you.

Views

PhotoAcute application has four views:

Camera	for snapping
Snapped	for browsing the snapped (unprocessed) photos
Photo Album	for browsing the ready (processed) images
Settings	for manipulating various settings

Current view is indicated on the top of the screen.

To switch between views, press **Right** and **Left arrows** (or move **Joystick** left or right).



To access the **Options** menu, press **Left menu button**.

To exit the application, press **Right menu button**.

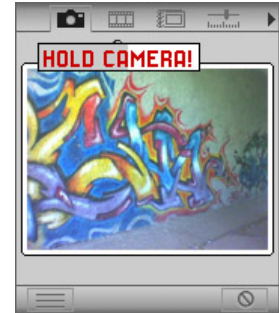


Snapping

Snapping is performed in **Camera** view.

Press **Joystick** (or **Camera button** on 6260) to start snapping.

While images are snapped, you are prompted to hold the camera. The progress is indicated for your convenience.



When the snapping is over, you are notified immediately.

After the image is snapped and saved, you are prompted to enter the image name. Enter the name and press **Ok**. You can press **Cancel** button here if you do not want this image to be saved.

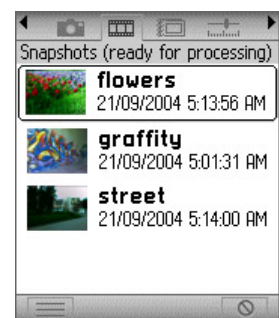


Snapped Images

In the **Snapped** view, you have the following options available:

Process Photo – start the processing of selected photo(s)

Delete – delete the selected photo(s)



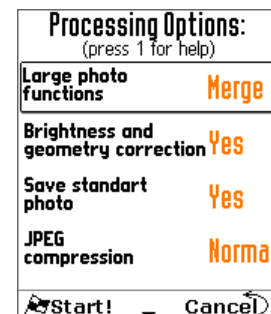
If you wish to process or delete more than one photo at a time, press joystick to mark the photos.

Processing

Processing Options

Select **Process Photo** from **Snapped** view. You are directed to the **Processing Options** page.

You can start processing by pressing **Left menu button**, or change the options using the **Joystick** (**up/down** – navigate, **center** – change the option).



Options:

- Large photo functions (Merge/Zoom/Both)**
 PhotoAcute produces large photos by two methods:
 - Merging several snapshots: gives maximum quality, but works only for static scenes
 - Applying intelligent zoom algorithm to the first snapped frame
 This option allows you to select what methods you want to be applied.
- Geometry and Brightness correction (Yes/No)**
 If this option is selected, PhotoAcute corrects barrel distortion and darkening in the corners. Normally, you should not disable this option.
- Save standart photo (Yes/No)**
 If this option is selected, PhotoAcute saves unprocessed photo, similar to what you can get using standard camera application. You can use this option for comparing the standard photo to PhotoAcute result.
- JPEG Compression (Low/Normal/High)**
 This option defines the JPEG compression level for all output photos. Use "Low" for maximum quality, "High" for minimum size.
- Save photos to (MMC/Phone)**
 This option defines whether the resulting photos will be stored to the Memory Card or to the Phone Memory.

Processing Results

After processing, several images are stored to your Photo Album:

image_std.jpg	Unprocessed photo, similar to what you can get using standard camera application
image_x2.jpg	Zoomed photo (1280x960)
image.jpg	Merged photo (1280x960)

Thus, if you have processed the photo named "**MyAuto**", you will get the following photos in your Photo Album: **MyAuto.jpg**, **MyAuto_x2.jpg** and **MyAuto_std.jpg**

Photo Album

In this view, you can browse your photos. Pressing **Joystick** will open the photo using the standard **Gallery** application, where you can view it or send it by MMS/Infrared/Bluetooth.

Settings

The following settings are available:

- **Lighting conditions (Day/Night)**
Set Night mode to snap photos in low lighting conditions
- **Snapshots per photo (2-8)**
The more snapshots are merged into one photo - the better quality of merged photo is achieved. However, the more time required taking the photo, so you should be sure that there would not be a motion in a scene during snapping.
Values less than 4 should not be used normally.
- **Confirm photo name (Yes/No)**
After the photo is snapped, PhotoAcute asks the user to enter the name for this photo. Setting this option to "No" removes this dialog – the photo will be automatically saved with name "imageN".

Support

If you have any problems or questions regarding using PhotoAcute, please contact our support by email: support@photoacute.com